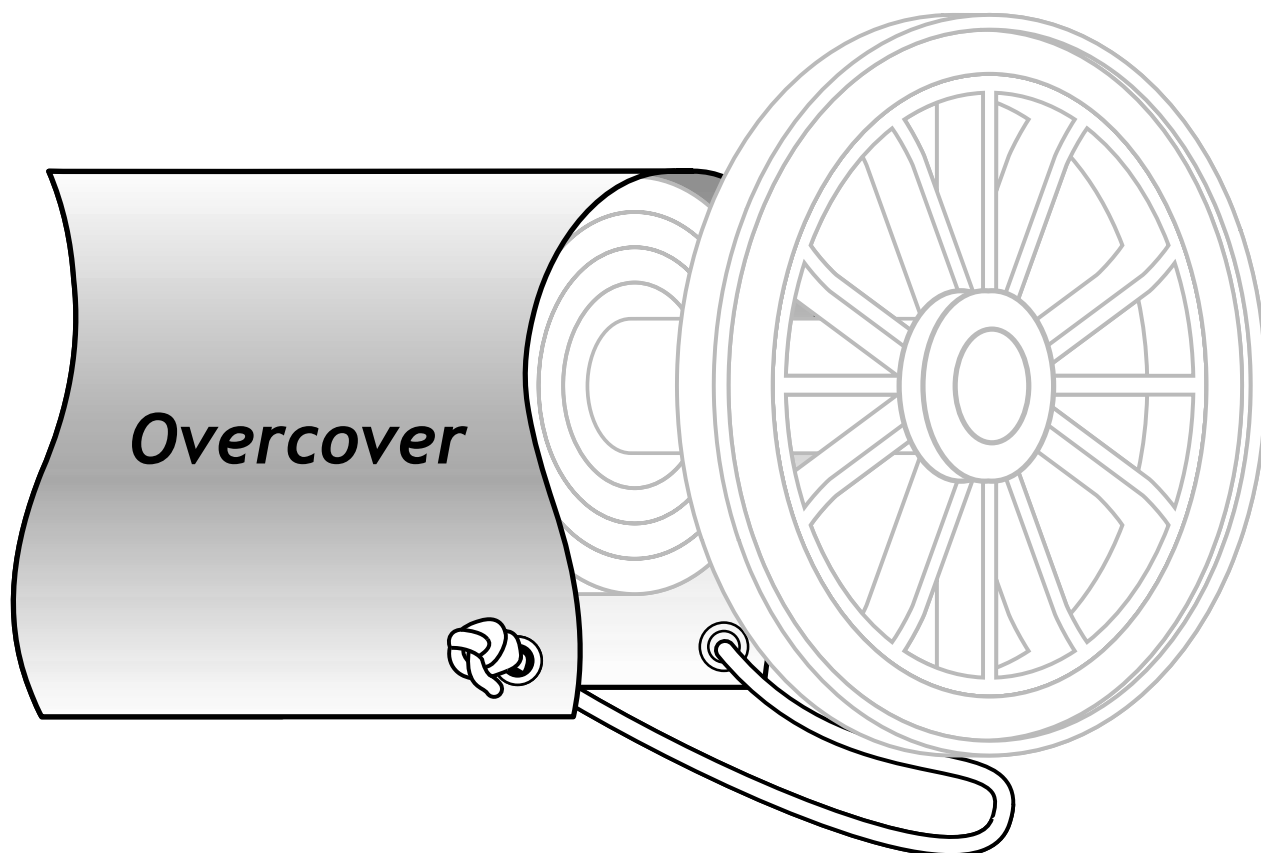


ASSEMBLY INSTRUCTIONS FOR HYDROTOOLS ROLLER COVER (MULTI-FIT)



***Multi-fit design
Suits most reel sizes
Protects stored blanket from damage from the sun***

Pack includes:

- Heat and UV reflective white fabric
- Elastic cord for securing ends
- Eyelet punch
- Tie cord for centre fastening
- 6 plastic eyelets
- Installation instructions

Hydrotools Pty. Ltd.

ACN 107 829 603 ABN 45 107 829 603
PO Box 2037, Crestmead, Queensland 4132 Australia
57 Magnesium Drive, Crestmead, QLD 4132 Australia. Telephone: (07) 3803 9090 Fax: (07) 3803 6258
Home Page: www.hydrotools.com.au Email: sales@hydrotools.com.au

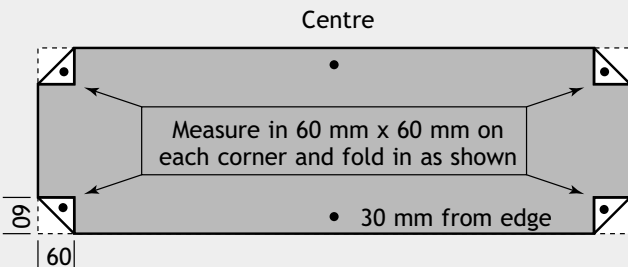
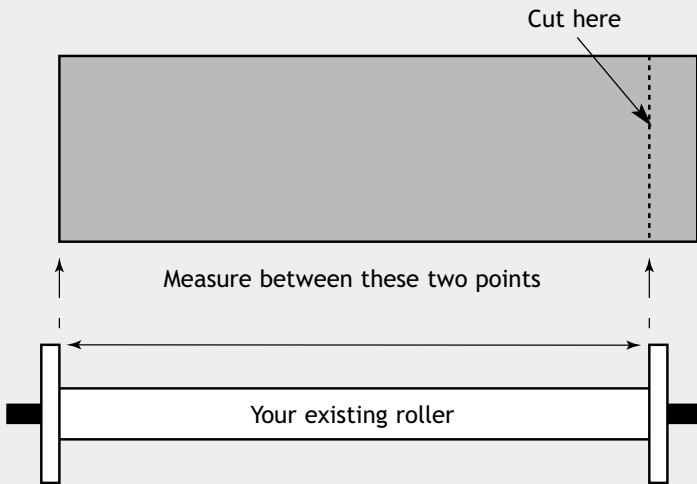
Assembly instructions for Hydrotools Roller Cover

YOU WILL NEED:

- Hammer
- Marker • Scissors

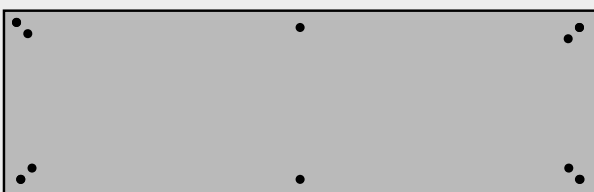
STEP 1: Measure and cut to size **Cover material supplied**

Measure distance between the roller handwheels on the reel and cut the cover material as shown by the dotted line.



STEP 2: Punch holes for eyes

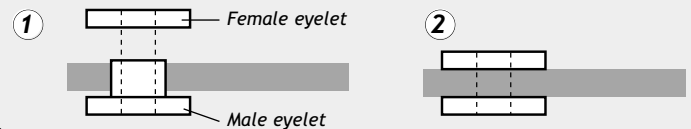
- Fold each corner in 60 mm over a piece of timber, then crease. Place the sharpened end of the tubular punch supplied against the cover material in the centre of the folded triangles, at the points marked • shown above. Strike the end of the punch lightly with a hammer to create a hole for the eyelets to go into. Repeat this on all four (4) corners of the cover.
- Fold cover in half lengthways to find the centre of each long side and mark the centre. Punch a hole on this mark 30 mm in from the edge.
- You should now have ten (10) punched holes in the roller cover.



STEP 3: Insert the eyelets into the punched holes

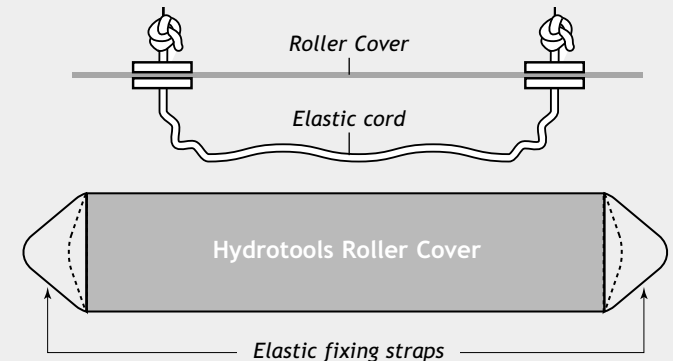
There are two parts to the plastic eyelets - male and female, as shown in diagrams (1) and (2) below.

- Fold the corner of the cover in to align the punched holes. Push the male section of the eyelet through the hole from underneath. Press the female portion of the eyelet firmly over the protruding male section and tap gently with a hammer until you hear it click into place. Repeat this process on all four (4) corners.
- Copy this process for the two (2) centre eyelets, through the single layer of material.



STEP 4: Attach the elastic cord to the Cover to secure

Cut the piece of elastic cord supplied, in half. Take one (1) piece and place each end through the eyelets which are in the short edge corners of the cover. Tie a large knot in each end of the elastic cord to stop it being pulled back through the hole. Repeat this procedure on the other end so you have a tied loop of elastic cord at each end. See below.



STEP 5: Attach the non-elastic cord

Using the thinner, non-elastic cord provided, tie one (1) end through one (1) of the centre eyelets along the long side of your cover. Use this to connect to the eyelet on the opposite side for securing purposes when your cover is fitted to the roller. See below.

STEP 6: Fit the Roller Cover to your reel

Roll-up the blanket onto the reel. Place the roller cover over the blanket and position the elastic straps over the handwheels to secure the ends. Tie centre cord off to secure the middle.

