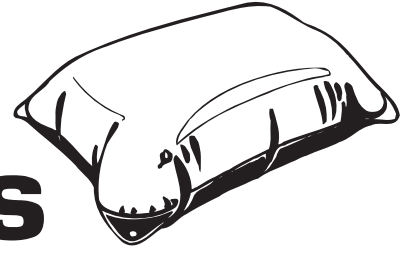


# Pool Cover Float Instructions



**Warning: This is not a safety device**

- **The Pool Float is for use with Pool Covers**
- **Do not use as a flotation aid or toy**
- **Inflate only with cold air**
- **Do not inflate with a pressure system**
- **Inflate float until it is full shape but still soft**

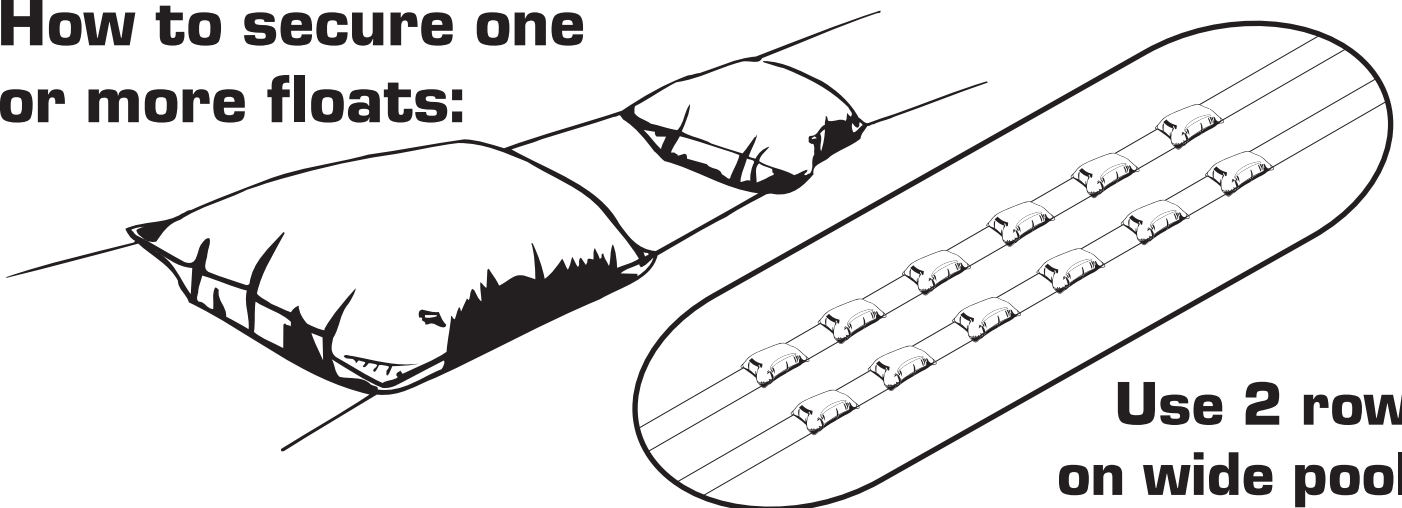
Your Pool Cover Float is easier to use when tied in place in the centre of the pool. This means the float will not move around as you pull the cover on and off the pool.

## How many floats?

Here is a chart to give an indication of the number of Pool Cover Floats you will need to suit your pool. You can add extra floats easily at any stage to give you the desired support for your pool cover.

<b>Pool Length</b>	<b>Pool width up to 4.5m</b>	<b>Pool width over 4.5m</b>
Up to 5.5m (18')	1 - 2	2 - 4
5.5m (18') to 7.6m (25')	2 - 3	4 - 6
7.6m (25') to 9.4m (31')	3 - 4	6 - 8
9.4m (31') to 12.2m (40')	4 - 5	8 - 10
12.2m (40') to 15.8m (52')	6 - 7	12 - 14

## How to secure one or more floats:



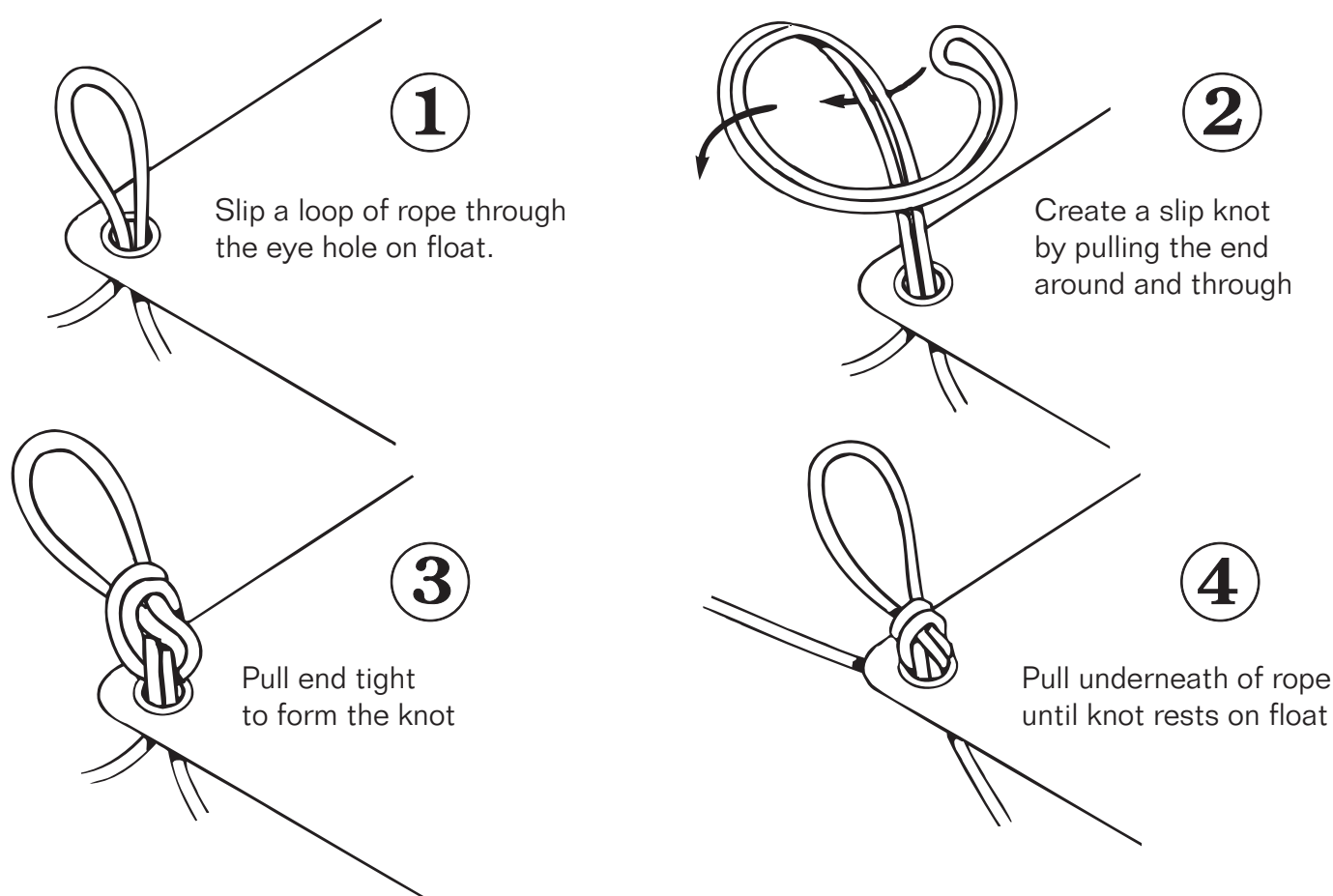
**Use 2 rows on wide pools**

Floats are joined together using a 3mm Poly rope (eg; clothes line rope). Cut 2 lengths of rope (per row of floats) 2 metres longer than the length of the pool. Details overleaf.

Inflate the Pool Cover Float(s) with a foot pump until they have formed their shape but are still soft. It is important not to use a pressure system or over-inflate the float(s) to avoid damaging them. N.B. If the float is firm or hard when it is used on the pool, the heat of the day will expand the air inside and could burst the seams.

Lay the 2 lengths of rope parallel to each other and spaced about 600mm (24") apart on a grass area or path. Position the float(s) lengthwise in the centre of the 2 ropes. If you have more than 1 float, space each float approximately 1.5m (5') apart.

Follow the diagrams to secure the float(s) to the ropes. The ropes should be tied loosely to the float so when the ropes are tensioned at each end, they don't strain the eye holes.



There are options for securing the rope at each end of the pool. On Above Ground pools you can tie the ropes to existing fixtures like wall supports, or tie them to tent pegs hammered into the ground adjacent to the pool.

For Inground pools you can either tie the ropes to existing pool cover fittings or add 4 new fittings (2 at each end) to secure the float(s). The new fittings can be made up from Abgal Pool Cover Fittings or by tying each rope end to 6mm (1/4") eyebolts and then drilling four 6mm (1/4") holes into the pool surround and inserting the eyebolts into the holes.

When you have positioned the float(s) and secured them in place, you can fit your Pool Cover to the pool and enjoy the feature of the float(s) not allowing the leaves and debris to accumulate in the middle. Trim excess rope and seal with heat to stop fraying.

If you have any questions about your Pool Cover Float(s), please contact your local supplier.