

## HOW TO ATTACH THE OVER-COVER

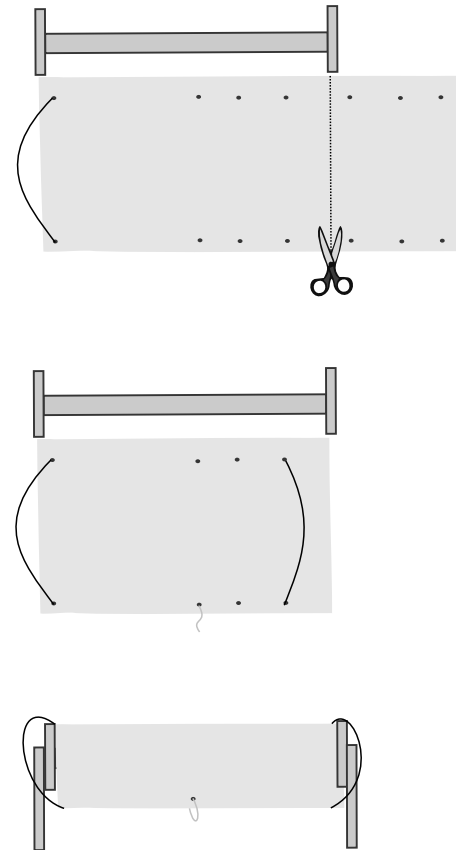
Every time your solar cover is rolled up on the reel, it should be covered by the protective over-cover. This prevents overheating, which can occur very quickly.

The over-cover is a 'one size fits all', so for a neater finish, you should trim it to size.

A black stretch cord is already attached at one end - line this up with one end of your reel. You can either fold it over or cut off the excess with sharp scissors.

Once the cover is the right size, loop the spare black stretch cord through the eyelets on the other side, as per the pre-attached end.

If the white tie off cord which has been looped through a central eyelet is too far off to one side, simply pull it through and reposition closer to the centre. When the over-cover is on, loop the cord through the eyelet on the other side and tie it off to stop the over-cover from blowing around.



## TIPS ON LOOKING AFTER YOUR POOL COVER & REEL

1. When rolled up on the reel, a solar cover can overheat very quickly. ALWAYS use the overcover. On a sunny day, even 10 minutes can be long enough to cause damage.
2. Avoid dragging the pool cover over decking or abrasive surfaces.
3. Do not sit, stand or place heavy objects on the reel tube. If the tube gets bent, it can not be repaired.
4. If your reel has castors, keep the brakes engaged at all times. Only release the brakes when you are moving the reel.
5. Ideally, a solar cover should be removed during winter/storm season, and replaced with a winter/debris cover.
4. Keep chlorine levels within the Australian Standard. Chlorine levels over 3ppm will reduce the life expectancy of your pool equipment and surfaces, and your pool cover too.

A pool cover does not increase chlorine levels, but *does* reduce chlorine usage - therefore, you will use less chlorine when your cover is on the pool. *Your chlorine output should be reduced by at least 50% when putting the cover on.* It's also a good idea to remove your cover for a few hours every week, to allow the pool to breathe - particularly if your cover is fitted right to the edge.

If you have a salt water sanitising system it is essential that chlorine be kept below 3ppm, as the chlorine generated by a salt system can be stronger than traditional chlorine.

It is necessary to manually check chlorine levels at least once a fortnight, preferably weekly- especially if your system is equipped with an automated doser.

# HOW TO ASSEMBLE YOUR PEGASUS REEL

Domestic Reel System  
For the storage of solar pool covers  
Model: HSTR\_



scan here to  
watch an assembly  
video on YouTube



## WHATS IN THE BOX:

- 1 x Crank Handle
- 2 x T Frames
- 1 x Lock Collar
- 2 x Rubber bushes (pre-fitted to T Frames)
- 2 x Locking pins (*sometimes in a plastic bag inside the tube*)
- 1, 2 or 3 x Aluminium tubes (adjustable length), with plastic insert pre-fitted at each end
- Black plastic guides (pre-inserted in the joining ends of the tubes plus spares)
- 1 x Allen Key
- 1 x Blanket attachment kit (straps, clips)
- 1 X Overcover
- 1 X Castor Set (if purchased)

## WHAT'S NOT SUPPLIED?

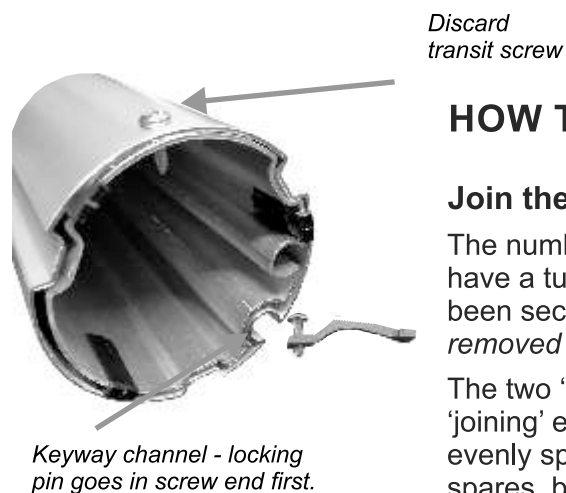
You will need a phillips head screwdriver and a pair of sharp scissors.

Optional: This tube is adjustable length and is intended to be secured with locking pins. If you prefer to use tek screws instead, you will need 2 tek screws and a power drill.

ABGAL Liners & Covers ABN 78 033 608 597  
56 Magnesium Drive Crestmead Qld 4132

For consumer support, please go to [www.abgal.com.au](http://www.abgal.com.au)  
or email [us@abgal.com.au](mailto:us@abgal.com.au)





## HOW TO ASSEMBLE THE REEL

### Join the tubes

The number of tubes you have will depend on the width of the pool. If you have a tube which has been pre-inserted into a larger tube it will have been secured for transit with a small screw. *This screw needs to be removed before inserting another tube.*

The two 'outside' tubes have the end axle pieces pre-fitted. The inside 'joining' ends have 3 black plastic guides already fitted. Check these are evenly spaced - if you break one there are spares, but don't panic as they're not critical.

Lay your tubes out ready for joining with an axle either end. Identify the keyway channel, and

insert one locking pin (screw end first). Insert from the 'joining end' and slide down toward the axle end.

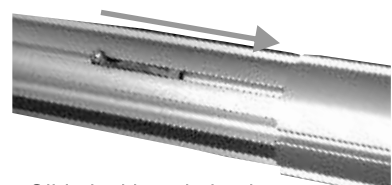
Repeat with the joining end of the other tube.

With the locking pins in place, you can slide the tubes together - you may need to twist them around a little so the internal grooves fit into one another. (When the internal grooves fit, the external keyway channels will not be aligned - don't try and make them).

Once together, the finished tube length should be adjusted to the correct width (Finished tube should be around 30cm wider than the pool). For maximum strength, the inside overlap on the tubes should be as equal as possible, **with a minimum of 45cm overlap in each tube for stability.**



Once you have the tube at the correct length, slide the locking pins back towards (and into) the overlap. When they are in the correct position, you should only see the head of the screw. **TIP:** Holding one tube at a slight angle will let you get the locking pins in as close as possible. Use the Alan Key to tighten the locking pins.



Slide locking pin back towards the join. Push it into the next tube so only the screw is visible.

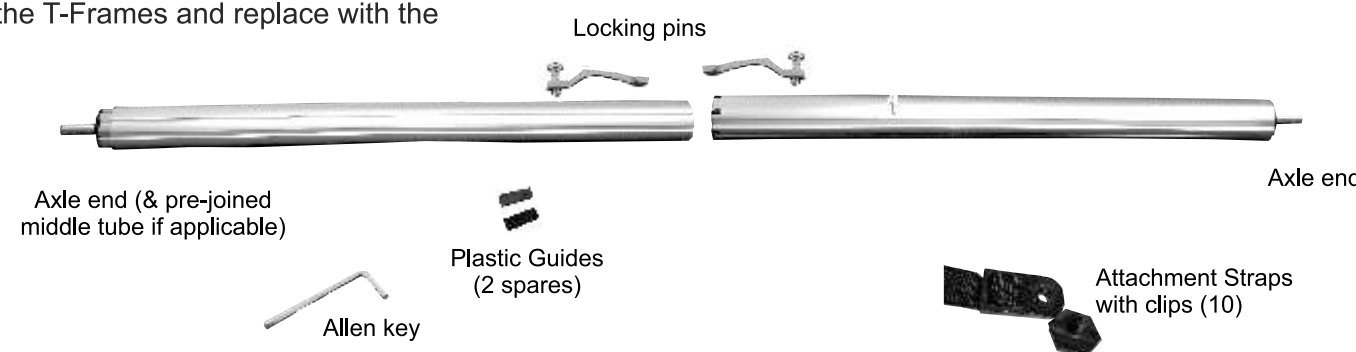
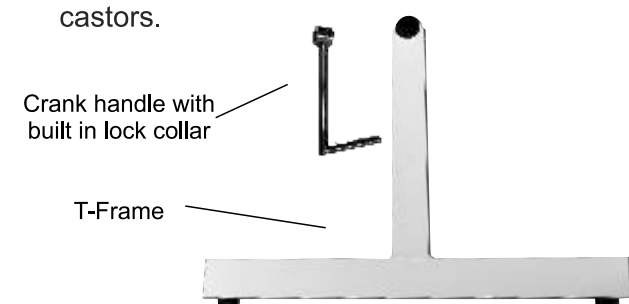


**Next, insert the attachment straps into the keyway** channel - space evenly (approx 60cm) apart. They can be inserted from either end.

DO NOT ATTACH THE LEGS UNTIL ALL THE STRAPS ARE IN PLACE.

**Once the straps are on, Slide the T-Frames onto the axles.** Secure one end with the locking collar (tighten with the allen key), and attach the crank handle on the other end. The crank has a locking collar built into it, and this also needs to be tightened with the allen key.

If you have bought castors, unscrew the black feet on the T-Frames and replace with the castors.



Scan this QR code to watch a video instruction.

## HOW TO ATTACH THE COVER TO THE REEL

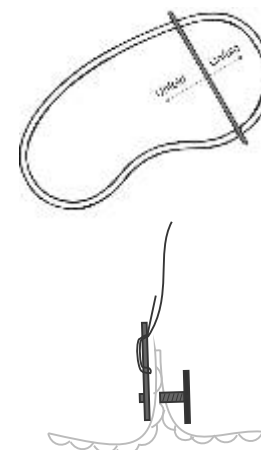
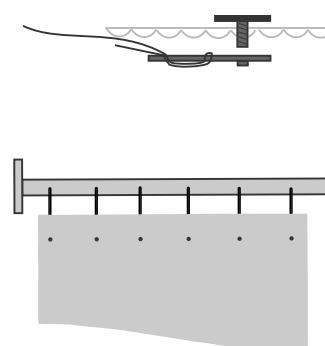
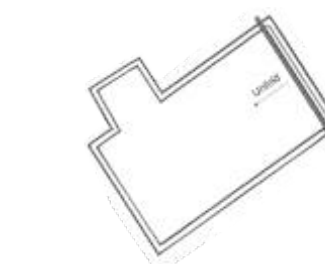
Step 1. Position the reel on the pool. The reel should be placed either over the pool (at the widest part) or at one end, as close as is practical to the edge of the pool (to minimise dragging over the edge). The position of the reel will affect where you attach the blanket to the reel.

On a rectangular pool place it at one end - if there is a step out, it should be at the opposite end. (The step is folded back onto the cover prior to rolling up onto the reel, so having it at the opposite end means it rolls on more smoothly).

To attach the cover to the reel, unscrew the ends of the attachment straps.

Puncture the cover with the screwdriver, insert the screw end of the clip through the cover, replace the clip and tighten. If you have trouble using your fingers, a 20c piece fits perfectly into the slot.

**TIP:** Don't attach the clip too close to the edge of the cover - give it at least 4-6cm to reduce the risk of it tearing through.



If you are placing the reel over the body of the pool, you need to attach the clips by pinching the blanket up, so the screw goes through 2 layers.

If using this method the pool cover should be cut 5-10cm longer to allow for this. If you have already trimmed your cover to the pool don't worry - you can still attach from the centre, it just means you'll probably have a small gap at either end of the pool that isn't covered.

Once your cover is attached, adjust the straps to make sure they are evenly tensioned, to ensure the cover rolls on and off evenly.

When on the pool, the solar cover should be sitting flat on the pool (bubble side facing down, into the water).

